



Specified Manufacturers Representative



Control Panel and OEM

SMR Gulf Coast

346-409-2500

<https://www.smrgulfcoast.us/contact>

SDU-B Series DC UPS

Temperature range: -15°C to +50°C
Power quality solution to keep control systems powered during brief outages and avoid damage to systems
Automatic self-test feature for UPS function and battery management check



SDU-B Series AC UPS

Temperature range: 0°C to +50°C
Power quality solution to keep control systems powered during brief outages and avoid damage to systems
Remote turn-on and shut-off capabilities



AC to DC Power Supplies

For control systems

SDN-D Series

Temperature range: -40°C to +70°C
IIoT with SCM Communication module
Ultra-high efficiency

SDN-C Series

Temperature range: -40°C to +70°C
High efficiency
Redundant options available



STFE Elite Series Tracking Filter with Surge Protection

These DIN rail mounted devices protect your equipment by continuously tracking AC power input and responding to high voltage transients and high frequency noise.



STV25K DIN Rail Series Surge Protective Devices

These DIN rail mounted devices protect your equipment by continuously tracking AC power input and responding to high voltage transients and high frequency noise.



Industrial Control Transformers

Transformers for control system voltage transformation.



Verisafe AVT

Up to 1000 V_{AC}/V_{DC}

Meets NFPA 70E Exception 1 for testing absence of voltage on de-energized equipment.

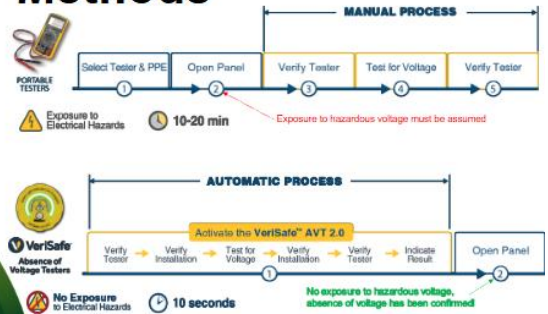
Process improvement by up to 20 minutes.
Process simplification to avoid human error.

Safety-by-design solution isolates personnel from electrical hazard.



SMR

Comparison of Test Methods



Data Access Port

Provide a solution for receiving power and data from a control panel without the need to open the panel.

Customizable

Standard punch out installation



MP300 Mobile Printer

Handheld printer that can print self-laminating labels, continuous labels, heat shrink labels and more with a variety of symbols.



DP4300M Desktop Printer

Printer that connects to your computer for an even more customizable printing solution.

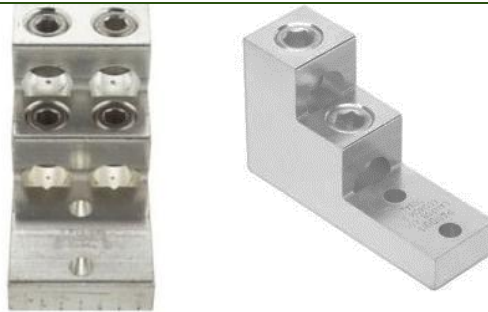


<p><u>Nylon Marker Plates</u> TDP or MP</p>	
<p><u>Continuous Tape Labeling</u> TDP or MP</p>	
<p><u>Heat Shrink Labeling</u> TDP or MP</p>	
<p><u>Self-Laminating Labeling</u> TDP or MP</p>	
<p><u>PanelMAX Duct</u> DIN Rail Duct</p> <ul style="list-style-type: none"> - Allows for DIN rail to be mounted over duct to save space in the panel <p>Corner Wiring Duct</p> <ul style="list-style-type: none"> - Allows for duct to be used in the vertical corner of the panel 	
<p><u>Panduit Wire Duct</u> <u>Panel Conduit</u> is the namesake of Panduit. Panduit offers the highest quality and variety of wire duct in the industry to fulfill any application.</p>	

Aluminum Mechanical Lugs

A variety of forms and sizes to fit a variety of needs.

Dual rated for AL/CU



Terminals

Rings, forks, disconnects, and ferrules



Crimp Tools

For lugs, terminals, and splices

Ergonomic controlled cycle hand tools for consistent crimp

Battery powered hydraulic crimpers for consistent tool powered and controlled crimp.

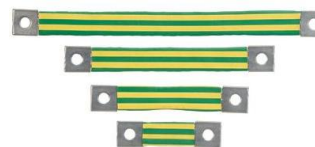
Bluetooth connectivity allows for quality control reporting on the job.

Milwaukee tools can also be used with Panduit dies for a UL Listed crimp solution for some power connector and grounding products. Please reach out to us for a full list of tools, connectors, and dies.

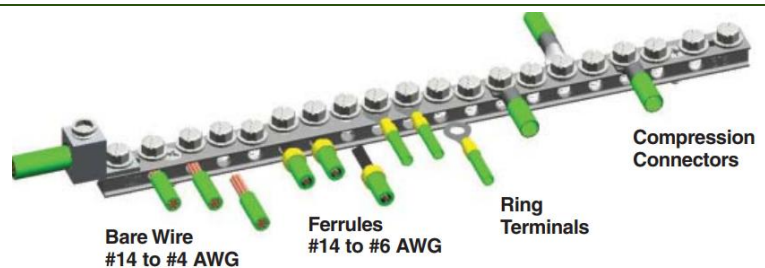
CP-881 and CP-991 offer semi-automatic tools for wire stripping and ferrule crimping for high volume applications.



Braided Bonding Straps



Universal Grounding Bar



Cable Ties

A wide variety of cable ties with a variety of materials and strengths to provide the best fit for any application.



PAT 4.0 System

- Fast wire harness system to allow for 84 ties per minute
- Ergonomic tool design reduces operator fatigue
- Touch screen operation for customization and troubleshooting
- Decrease downtime and increase productivity in active hours



Cable Tie Accessories

A wide variety of mounts and accessories for use in all kinds of applications and environments.



Cable Tie Tools

Standard ties:

GTS-E, GS2B-E, GTH-E, GS4H-E, PTS, PTH, PPTS, STS2, STH2

SS Ties:

GS4MT-E, HTMT, PPTMT, ST2MT, PBTMT
(Note that different strengths of tie may need different tools)



Abrasion Protection

A variety of protection materials to prevent damage to cable insulation and assist in bundling the cables
Panduit's Pan-Wrap™ solution provides the wire management benefits and abrasion protection of spiral wrap with a much easier install.



Atkore™

Unistrut



Unistrut Channel

With all of the standard offerings, Unistrut can provide any kind of strut that is needed for a project. Unistrut also prides itself on assisting with project delivery with customized cuts and parts to ease installation.

Fiberglass channel also available through Aickinstrut for a weight saving solution.



Unistrut Fittings

Unistrut boasts one of the most comprehensive catalogs of fittings to support any design



Atkore™

Kaf-Tech



Flexible Conduit

LFMC UL
LFMC UL - Computer Blue
LSZH
SS LSZH
NMLT-B
RWS
RWA



Push Button Pendant Stations

Customizable control stations for controlling a variety of shop equipment.



Power Drops

Receptacles set up for distributing power to individual workstations from above.
Wire mesh for strain relief is available.



Cable Reels

Customizable retractable cable reels for easy storage of temporary worksite power.

Also used on portable equipment for easy cable storage and utility.



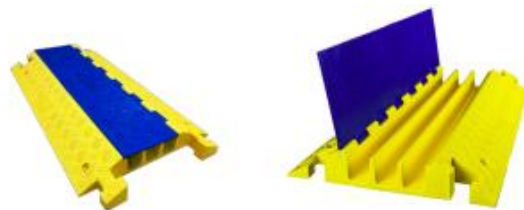
Customizable Cordsets

- Various designs available up to 400A
- CAM Type, IEC, and NEMA configurations available
- Designed for indoor and outdoor
- Factory assembled Y, W, and OEM solutions



TuffTraxx Cable & Hose Protectors

- Protect cables and hoses from being stepped on or run over and damaged
- Up to 50,000 lbs (about twice the weight of a school bus) load capacity



Portable Lighting

- For maintenance or workstation lighting
- Commercial and industrial grade



IEC 309 Pin and Sleeve

Devices that meet IEC 309-2 specifications including UL1682 and UL1686
Fully interchangeable with other manufacturers that meet these standards



Arc-Flash Relays

- Protect your equipment and people while reducing downtime in an arc flash.
- Detects a developing arc-flash incident and sends a trip signal to interrupt power before significant damage occurs.
- Simple plug-and-play installation.



Ground-Fault Relays

- Quickly and reliably detect the breakdown of insulation resistance caused by moisture, vibration, chemicals or dust.
- Littelfuse offers a wide variety of ground-fault relays, to meet specific, niche needs.



UL Class Fuses

Littelfuse offers various industrial power fuses to serve many applications in the food and beverage industry. Innovative features such as indication improve productivity while enhancing the safety of systems.



High-Speed Fuses

- Designed for sensitive power electronic devices.
- Offer extreme current-limiting protection and balanced performance for longevity.
- Available in direct busbar mount flush end and blade designs.



Surge Protective Devices

- Provide equipment protection from transient overvoltage events lasting micro-seconds.
- Mitigate damage and downtime.



Pump & Liquid Level Controls

Detect abnormalities to ensure pumping systems operate at required flow rates. Detect pump leaks and motor overheating on submersible pumps.



Motor and Pump Protection

Prevent damage and stalls from overloads, phase loss, unbalanced loads, undervoltage, and more.



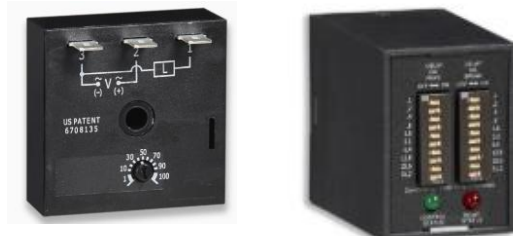
Power Distribution Blocks

Littelfuse POWR-BLOK industrial power distribution blocks offer a safe, convenient way of splicing cables, providing a fixed junction tap-off point, or splitting primary power into secondary circuits



Time Delay Relays

A variety of time delay relays for both single function and multi-function use.



Intrinsically Safe Relays

Protect hazardous location circuits and a core component for intrinsically safe applications.



Alternating Relays

Optimize electrical loads by equalizing the run time of two or more motors.



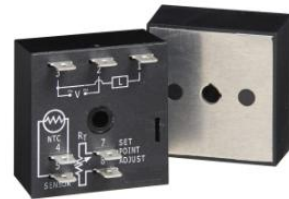
Voltage and Phase Monitors

Monitor against voltage fault conditions, including phase loss, overvoltage, undervoltage, and phase sequence.



TCR9C Temperature Control Relays

Single setpoint temperature controller. External setpoint adjustment. NTC thermistor sensing.



Solid State Relays

Engineered for high-frequency operations with cutting-edge technology for maximum uptime, enhanced durability, reliable performance, and long life.



Aluminum Conduit and Conduit Fittings

Made in Pasadena, TX

Stainless Steel Conduit and Conduit Fittings

Aluminum EMT and Fittings

Custom lengths, bundles, and prefabrication available!



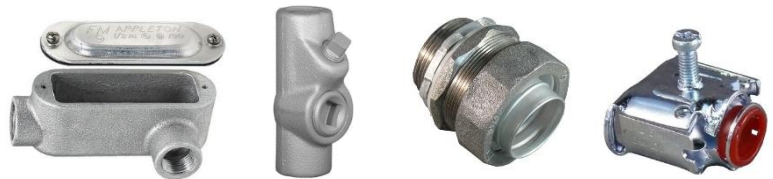
Hazardous Area Enclosures

Appleton manufactures cast aluminum NEMA 7 enclosures locally in Houston for control panel and OEM solutions going into hazardous locations.



Conduit Fittings

A variety of fittings to support conduit in and out of an enclosure. Drains, breathers, hubs, liquid tight connectors, seals, conduit bodies, and more.



Plugs and Receptacles

A range of both hazardous and ordinary location plugs and receptacles for any application

U-Line:

Class 1 Division 1&2 BCD

20A 125V or 250V

NEMA 4X*

Powertite:

30, 60, 100, 150, 200, 400 Amp

Multiple wire and pole configurations

Unclassified locations NEMA 4X*

EBR Series:

Interlocked disconnect switch

Class 1 Division 1&2 BCD NEMA 4X*



Cord Grips and Cable Glands

A variety of solutions for cable going in or out of an enclosure.



Control Stations

Appleton manufactures a variety of control station solutions rated for hazardous environments



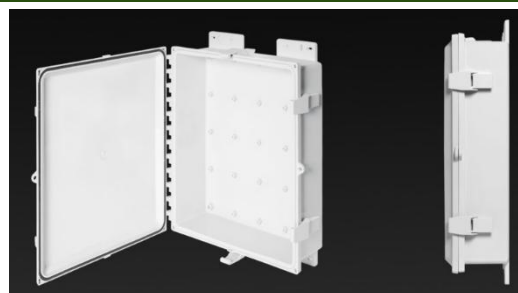
PolyStar Series

Polycarbonate enclosures that are strong, easy to modify, and UV resistant of varying sizes.
Temperature range: -40°F to +248°F
Various accessories available
NEMA 4X for washdown



PolySlim Series

Lower profile enclosures for space saving where standard, deeper enclosures are not necessary.
Temperature range: -40°F to +248°F
Various accessories available
NEMA 4X for washdown



J Series Enclosures

Fiberglass enclosures that are strong, durable, and UV resistant of varying sizes.
Temperature range: -76°F to +274°F
UL 746C f1 rated.
Various accessories available.



SolarShield™ HMI Cover

Protect HMI screens from UV and harsh environmental conditions to promote a longer life.





Austin Enclosures

A variety of standard and customizable electrical enclosures and wireway made of Aluminum, Steel, or Stainless Steel with a full range of NEMA ratings to support a variety of applications.



Swivelpole™

Maxis Joint

Allows for pole mounted items, including lighting, surveillance equipment, networking equipment, and more to be easily and safely lowered and raised for maintenance. Conversion tool available for existing poles.





Tools for Every Industry

With reliable German engineering, Knipex provides top quality tools for every industry, including the electrical and electronics industry.

Ratcheting Knife

Cable Shears (9")

Electronics Diagonal Cutters

Electrical Installation Pliers

Needle Nose Pliers

Twintforce® Diagonal Super Cutters

Cable Knife

Cable Shears 1000V Insulated (20")

Forged Strippers

