

SMR GULF COAST

Specified Manufacturers Representative









RENEWABLE ENERGY

SMR Gulf Coast

346-409-2500

<https://www.smr-gulfcoast.us/contact>

<p>Overvoltage Protection SPDs and Varistors for protecting equipment from overvoltage damage.</p>	<p><u>SPD2 Series</u> <u>Metal Oxide Varistors</u> <u>Surface Mount Multi-Level Varistors</u></p>	
<p>1500 VDC Fuses and Fuse Holders Fuses and fuse holders designed for 1500 VDC solar systems of varying amperages.</p>	<p><u>SPXC Series</u> <u>SPXV Series</u> <u>SPXI Series</u> <u>SPNH Series</u> <u>ESR Series</u> Designed for battery racks <u>LFXV15 Series</u> <u>LFPXV Series</u></p>	
<p>1000 VDC Fuses and Fuse Holders Fuses and fuse holders designed for 1000 VDC solar systems of varying amperages.</p>	<p><u>SPFI Series</u> <u>SPF Series</u> <u>LPHV Series</u> <u>SPFJ Series</u> <u>LFJ1000 Series</u></p>	
<p>High Speed Fuses 1000 and 1500 VDC semiconductor fuses utilizing POWR-SPEED® technology for fast protection of sensitive equipment.</p>	<p><u>PSR Series</u> 1000 VDC <u>PSX Series</u> 1500 VDC</p>	
<p>600 VDC Fuses Fuses designed for 600 VDC systems of varying amperages.</p>	<p><u>IDSR Series</u> Class RK5 <u>KLKD Series</u> Class Midget</p>	

<p>Arc-Flash Relays Relays designed to protect against the dangers of arc flash</p>	<p><u>AF0025 Series</u> Compact solution for combiner boxes and inverters</p>	
<p>Ground-Fault Protection Relays Microprocessor based relays designed to protect against ground-fault in grounded systems.</p>	<p><u>SE-601 Series</u> Adjustable pickup (1-20 mA) Adjustable time delay (50-2.5 ms)</p> <p><u>EL731 Series</u> Adjustable pickup (30-5,000 mA) Frequency range (0-90 Hz, 20-6,000 Hz) Analog output (4-20 mA) Adjustable time delay Temperature sensor input Network communication Harmonic filtering Universal power supply</p>	
<p>Distribution Blocks Solar rated splicer and power distribution blocks.</p>	<p><u>Power Distribution Blocks</u></p>	
<p>100 VDC Fuses Surface mount fuses designed with PV systems in mind. Reliable in high temperature environments.</p>	<p><u>400PV Series</u> Applications:</p> <ul style="list-style-type: none"> • Photovoltaic shingles • Photovoltaic cells 	
<p>Switch Products Design eliminates need for external bridging links (jumpers) to lower heat dissipation and save installation time.</p>	<p><u>DC Disconnect Switches</u> <u>Class J Disconnects</u></p>	
<p>Temperature Sensors Enables operating control and diagnostics for energy saving and system optimization.</p>	<p><u>RTDs</u> <u>NTC Thermistors</u></p>	

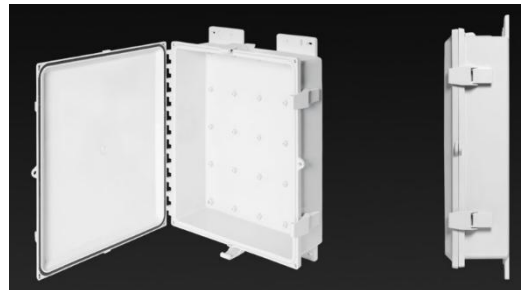
PolyStar Series

Polycarbonate enclosures that are strong, easy to modify, and UV resistant of varying sizes.
 Temperature range: -40°F to +248°F
 UL 746C f1 rated.
 Various accessories available.



PolySlim Series

Lower profile enclosures for space saving where standard, deeper enclosures are not necessary.
 Temperature range: -40°F to +248°F
 UL 746C f1 rated.
 Various accessories available.



SolarShield™ HMI Cover

Provide protection for Human Machine Interface screens from the sun, water, dust, and other environmental conditions. Protects from glare to allow HMI screen to more easily be read outdoors. Inner doors allow for hands free use and additional glare protection.



J Series Enclosures

Fiberglass enclosures that are strong, durable, and UV resistant of varying sizes.
 Temperature range: -76°F to +274°F
 UL 746C f1 rated.
 Various accessories available.



Cable Management:

Contractor Grade Edge Clip

Nylon 6.6 weather resistant material
Compatible with frame thickness of
0.7mm-3mm (0.028"-0.118")



Stainless Steel Edge Clip

Compatible with panel thickness of
0.051" to 0.098"
Rolled edges prevent damage to
cables



Stronghold Fully Coated Stainless Steel Ties

Coating prevents damage to cables
or corrosion between dissimilar
metals.
UV Resistant



Nylon 612 Cable Ties

Weather resistant
Superior UV Resistance
Chemical Resistant (zinc chloride,
calcium chlorides, dilute acids, etc.)
20-year estimated life expectancy
Wide temperature range for
consistent outdoor high temperature
environments (-76°F - 194°F)



Nylon 6.6 Cable Ties

Weather resistant
UV Resistant



Cable Tie Tools

Standard ties:
GTS-E, GS2B-E, GTH-E, GS4H-E, PTS,
PTH, PPTS, STS2, STH2
SS Ties:
GS4MT-E, HTMT, PPTMT, ST2MT,
PBTMT
(Note that different strengths of tie
may need different tools)



UV Rated Corrugated Loom Tubing

Black Polypropylene material with
substantial UV additives
-40° F - 185° F
Crush impact and abrasion
protection for cable



Stainless Steel Solar Wire Hanger

Support PV cable runs.
Able to latch and unlatch for
maintenance.
Durable 304 stainless steel



Cable Cleats

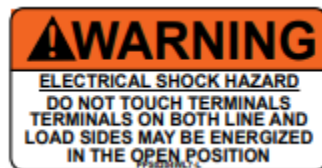
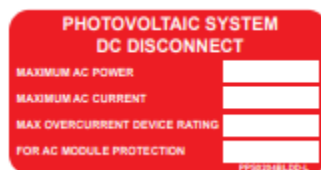
Contain wires from electromechanical forces at initial point of short circuit fault.
Protect personnel and property.
Ability to install after cable is laid.
Multiple forms: Quad, trefoil, single conductor.
Multiple materials: SS, Poly, Alum



Identification:

Preprinted Solar Labels

Labels premade to comply with NEC code in photovoltaic applications.
UV Resistant
-40°F to 180°F
Variety of options



MP300 Mobile Printer

Handheld printer that can print self-laminating labels, continuous labels, heat shrink labels and more with a variety of symbols.



TDP43ME Desktop Printer

Printer that connects to your computer for an even more customizable printing solution.



Nylon Marker Plates

TDP or MP



Continuous Tape Labeling

TDP or MP



Heat Shrink Labeling

TDP or MP

Self-Laminating Labeling

TDP or MP

Power Connectors:

Aluminum Compression Lugs

1-Hole and 2-Hole



Copper Compression Lugs

1-Hole and 2-Hole

Long Barrel and Short Barrel

Flex conductor option

Narrow tongue option



Aluminum Splices



Aluminum Mechanical Lugs

A variety of forms and sizes to fit a variety of needs



Lay-in Lugs



Terminals

Rings, forks, disconnects, and ferrules

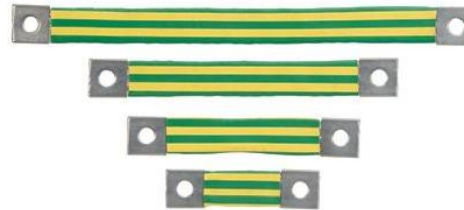


Crimp Tools

For lugs, terminals, and splices
Ergonomic controlled cycle hand tools for consistent crimp
Battery powered hydraulic crimpers for consistent tool powered and controlled crimp.



Braided Bonding Straps



Grounding:

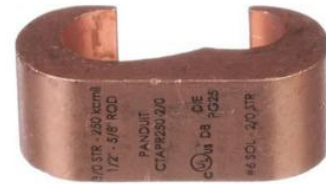
GCE Series Grounding Connectors

Slotted design for easy assembly
Antioxidant compound pre-applied
Suitable for direct burial
For ground rod, rebar, or conductors



CTAPR Series Grounding Connectors

Suitable for direct burial
For ground rod, rebar, or conductors



Split Bolt Connectors



Service Post



Crimp Tools

Battery powered hydraulic crimpers for consistent tool powered and controlled crimp.



Safety:

Detectable Tape



Electrical Tape

Suitable for a wide range of indoor and outdoor applications and temperatures.



Lockout Tagout

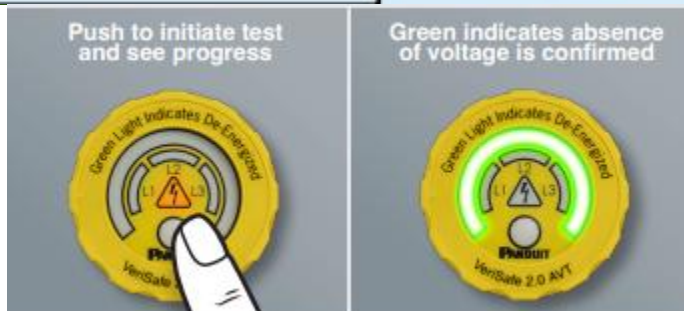
Tags, padlocks and more



Verisafe 2.0 AVT

1000 VDC

Network module available for real-time diagnostics



Medium Voltage Transformers

Pad-mount Transformers

- 3PH; 30 kVA - 10,000 kVA; Up to 35 kV
- 1PH; 5 kVA - 250 kVA; Up to 19.9 kV
- Type II non-PCB mineral oil

Dry-Type Transformers

- 300 kVA - 5,000 kVA
- Up to 35 kV

Pole Mount Transformers

- 5 kVA - 333 kVA
- High Voltage: 2.4 kV - 34.5 kV
- Low Voltage: 120/240, 240/480, 277
- Type II non-PCB mineral oil

Additional options available



Medium Voltage Switchgear

Pad-Mounted Switchgear

- 15 kV double-door design
- UL listed and IEEE C37.74
- Up to 4 bays with multiple switch and fuse configurations

Metal Enclosed Switchgear

- 5 or 15 kV nominal voltage rating
- Enclosure: NEMA 3R, outdoor/indoor
- BIL: 95 kV
- 27 kV designs available

Additional options available



Low Voltage Transformers

- 5 kVA - 1000 kVA
- Up to 800V
- Self-Cooled (AA)
- NEMA 3R Standard; 4X available
- High-grade silicon-steel core
- Impedance 5.75 % ($\pm 7.5\%$)

Additional options available



Substation Transformers

- 300 kVA - 100,000 kVA
- Up to 145 kV
- Lifting Lugs
- High-grade silicon-steel core
- Externally clamped high- and low-voltage bushings
- Nitrogen blanket
- Type II non-PCB Mineral Oil

Additional options available



① Jobsite Power

PTU

Power Transformation Units convert 480V or 600V power, to lower voltages used for portable tools and lighting.

② Jobsite Power

PDC/PDU

Power Distribution Unit provide local power with overload, open neutral protection and GFCI protection for 120, 240, or 208V receptacles.

③ Jobsite Lighting

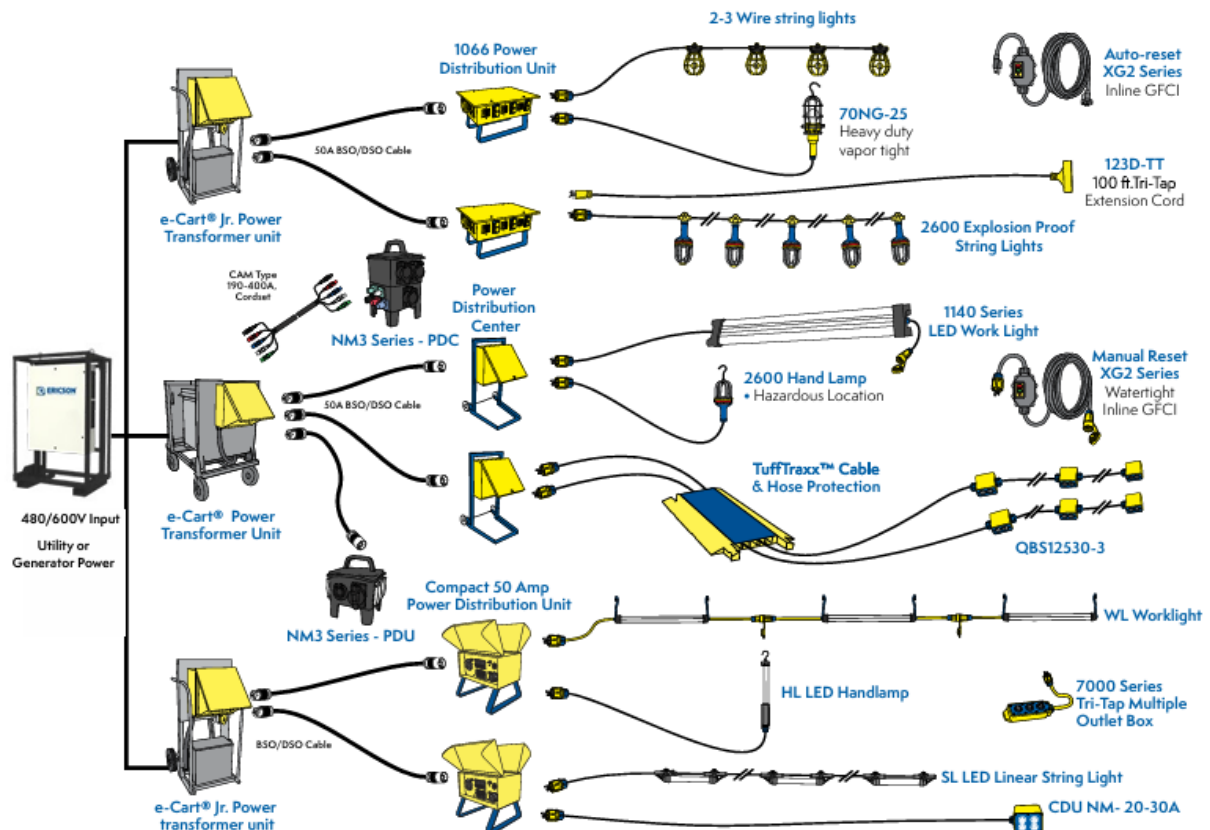
Lighting

Ericson provides a myriad of lighting solutions, from stringlights and baylights to handlamps and hazardous area fixtures.

④ Portable Power

Cordsets

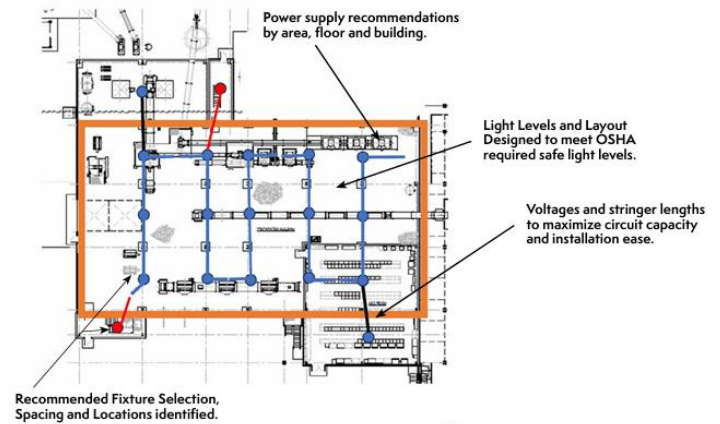
Factory assembled solutions provide safe, reliable NEC, and OSHA Code Compliant GFCI & AEGCP cordsets.



Temporary Power and Lighting Layout Support

- Service to provide a system design to meet OSHA requirements
- Provide recommendations from initial power input to onsite power and lighting
- Bill of Material provided
- Ericson's Quick Connect system allows for a plug and play solution from the factory to eliminate as much electrical hazard exposure as possible.

Lighting and Power Layout Example



Industry Leading, Ericson Exclusive

Portable Panel Boards

- 400-1200A
- Intake from Utility or Generator Power
- Rear CAM-Type Input
- Receptacle options include CAM-type, NEMA, and IEC
- Customizable
- Output to PTUs



e-Cart and e-Cart Jr. PTUs

- Highly customizable
- Open, enclosed, and hazardous options
- Input from portable panelboard
- Transform to usable voltage
- Output into PDUs/PDCs
- Stackable non-cart PTU's also available



Power Distribution Centers (PDC)

- Up to 300A
- Non-metallic and metallic options available
- Wall mount or freestanding
- Customizable configurations
- UL943 Self-Testing GFCI
- Available in NEMA 3R, 4X



Power Distribution Unit (PDU)

- Non-metallic and metallic options available
- Non-metallic are designed to be stackable
- Up to 100A
- GFCI can be included



Compact Distribution Unit (CDU)

- Up to 50A
- Non-metallic and metallic options available
- Outdoor and indoor ratings available
- UL943 GFCI
- Patented UL1640 Open Neutral Protection
- Stringers allow for spaced out outputs on one circuit



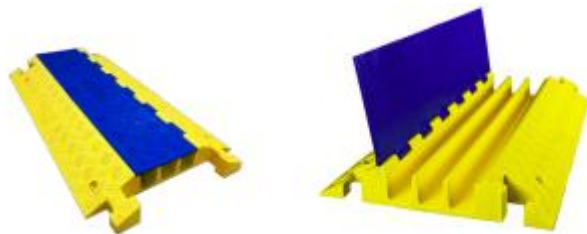
Customizable Cordsets

- Various designs available up to 400A
- CAM Type, IEC, and NEMA configurations available
- Designed for indoor and outdoor
- Factory assembled Y, W, and OEM solutions



TuffTraxx Cable & Hose Protectors

- Protect cables and hoses from being stepped on or run over and damaged
- Up to 50,000 lbs (about twice the weight of a school bus) load capacity



Portable Lighting

- Used for maintenance or for new construction
- String lights
- Hand lamps
- Commercial and industrial grade





Aluminum Conduit and Conduit Fittings

Made in Pasadena, TX

Stainless Steel Conduit and Conduit Fittings

Aluminum EMT and Fittings

Custom lengths, bundles, and prefabrication available!



Atkore™

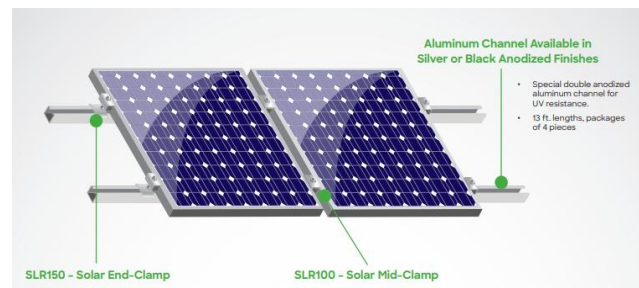
Unistrut



Unistrut Channel

Special double anodized aluminum channel for UV resistance
Channel and accessories provide an ideal racking system for solar panels

Made in the USA - BUY AMERICA



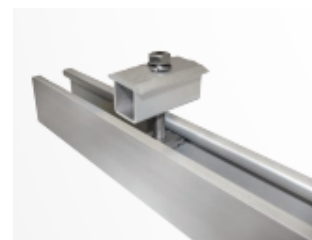
Solar End Clamp

End-clamp design for use with strut-based racking system
End-stop feature allows use with vertical strut
Meets uplift loads of 350 lbs



Solar Mid-Clamp

Mid-clamp design allows use with strut-based racking system
Provides .8" (21 mm) panel spacing
Meets spacing requirements of WEEB-WMC
Meets uplift loads of 350 lbs



Atkore™

US Tray



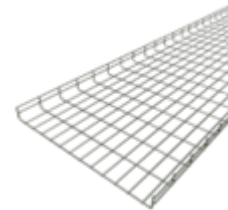
Ladder Tray

I-Beam style aluminum ladder tray that meets and exceeds industry standards.
Full array of fittings applied.
Customizations are available to fit your project's needs.



Eagle Basket Tray

Available in electroplated zinc, hot dip galvanized, any color powder coated, or stainless steel
Straight lengths come preinstalled with splices; no additional hardware required.
Array of fittings available to support any design.



US Tray-Glas

Fiberglass tray and channel for applications where corrosion protection is required and weight is a factor of installation.



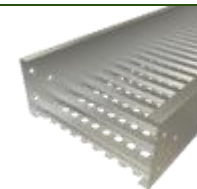
Swage Tray

Outward C Channel style tray. Available in pregalvanized steel, HDG Steel, Aluminum, and 304SS.



Trof

Tray with ventilated or solid bottoms to increase strength and protect against wildlife. Available in pregalvanized steel, HDG Steel, and 304SS.



Atkore™

Kaf-Tech



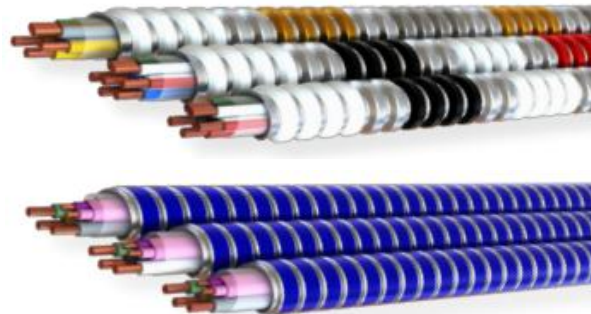
Flexible Conduit

LFMC UL
LFMC UL - Computer Blue
LSZH
SS LSZH
NMLT-B
RWS
RWA



MC Cable

Provide reliable power distribution, whether to server racks or emergency power systems, with a more robust construction than standard cable.



Austin Enclosures

A variety of standard and customizable electrical enclosures and wireway made of Aluminum, Steel, or Stainless Steel with a full range of NEMA ratings to support a variety of applications.



Customizable Transformers

Up to 600V
Popular in EV Infrastructure
Available in NEMA 1, 3R, 4, 4X
Made in the US



SDU-B Series DC UPS

Temperature range: -15°C to +50°C
Commonly used in wind turbine controls
Power quality solution to keep control systems powered during brief outages and avoid damage



AC to DC Power Supplies

For control systems

SDN-D Series

Temperature range: -40°C to +70°C
IIoT with SCM Communication module
Ultra-high efficiency

SDN-C Series

Temperature range: -40°C to +70°C
High efficiency





Tools for Every Industry

With reliable German engineering, Knipex provides top quality tools for every industry, including the electrical and electronics industry.

Ratcheting Knife

Cable Shears (9")

Electronics Diagonal Cutters

Electrical Installation Pliers

Needle Nose Pliers

Twinforce® Diagonal Super Cutters

Cable Knife

Cable Shears 1000V Insulated (20")

Forged Strippers



SMR GULF COAST EV CHARGING SOLUTIONS

BreezeEV

Electric vehicle charging equipment
Networking option
RFID Capability
Multiple mounting options
Customizable labeling

Louisiana and Mississippi only



PayEnergy

Electric vehicle charging equipment
Payment kiosks and software
Multiple manufacturers of chargers

- ABB
- PayEnergy
- Siemens
- More!

US made chargers available for
government grants for EV
infrastructure

Texas and Oklahoma only

